



# Lightweight solutions for automotive parts



**Achieve™ Advanced PP will unlock the possibility of high-performance automotive parts**

**Challenge reality and rethink what's possible**

Achieve Advanced PP7945E1 can deliver:

- High flow
- Elevated stiffness
- Stiffness and impact balance

Achieve Advanced PP6302E1 can deliver:

- Better foamability
- Lightweight

## Achieve Advanced PP7945E1

MFR (230°C/2.16 kg) - g/10 min	Tensile strength at yield MPa	Flexural modulus (2.0 mm/min) - MPa	Notched Izod impact (RTNI) (23°C) - kJ/m <sup>2</sup>	Heat Deflection Temperature (0.45MPa)-°C
115	32.2	1810	4.5	113
ExxonMobil Method	ISO 527-2	ISO 178	ISO 180/1A	ISO 75-2/Bf

Values given are typical and should not be interpreted as specifications. Data generated by or on behalf of ExxonMobil Chemical.

## Achieve Advanced PP6302E1

MFR (230°C/2.16 kg) - g/10 min	Tensile strength at yield MPa	Flexural modulus 1% secant (1.3 mm/min) - MPa	Notched Izod impact (RTNI) (23°C) -J/m	Melt Strength (190°C)-cN
1.9	39.4	2040	47	40.2
ASTM D1238	ASTM D638	ASTM D790A	ASTM D256A	ExxonMobil Method

Values given are typical and should not be interpreted as specifications. Data generated by or on behalf of ExxonMobil Chemical.

**More activities at  
Chinaplas 2023  
(WeChat Scan):**



**Creating Sustainable Solutions.  
Together.**

For more information: [exxonmobilchemical.com/pp](http://exxonmobilchemical.com/pp)

© 2023 ExxonMobil. ExxonMobil, the ExxonMobil logo, the interlocking "X" device and other product or service names used herein are trademarks of ExxonMobil, unless indicated otherwise. This document may not be distributed, displayed, copied or altered without ExxonMobil's prior written authorization. To the extent ExxonMobil authorizes distributing, displaying and/or copying of this document, the user may do so only if the document is unaltered and complete, including all of its headers, footers, disclaimers and other information. You may not copy this document to or reproduce it in whole or in part on a website. ExxonMobil does not guarantee the typical (or other) values. Any data included herein is based upon analysis of representative samples and not the actual product shipped. The information in this document relates only to the named product or materials when not in combination with any other product or materials. We based the information on data believed to be reliable on the date compiled, but we do not represent, warrant, or otherwise guarantee, expressly or impliedly, the merchantability, fitness for a particular purpose, freedom from patent infringement, suitability, accuracy, reliability, or completeness of this information or the products, materials or processes described. The user is solely responsible for all determinations regarding any use of material or product and any process in its territories of interest. We expressly disclaim liability for any loss, damage or injury directly or indirectly suffered or incurred as a result of or related to anyone using or relying on any of the information in this document. This document is not an endorsement of any non-ExxonMobil product or process, and we expressly disclaim any contrary implication. The terms "we," "our," "ExxonMobil Product Solutions" and "ExxonMobil" are each used for convenience, and may include any one or more of ExxonMobil Product Solutions Company, Exxon Mobil Corporation, or any affiliate either directly or indirectly stewarded.

## 650JSe Small and medium-sized Servo-driven

Two-platen Injection Molding Machine (450-900JSe II)

### Advanced two-platen clamping design

The compact structure of the two-platen clamping design significantly reduces the floor space occupancy.

### Minimal rebound

Synchronous tie bar locking system with buffer feature ensures the nut locking precision with minimal rebound.

### Friction-free design

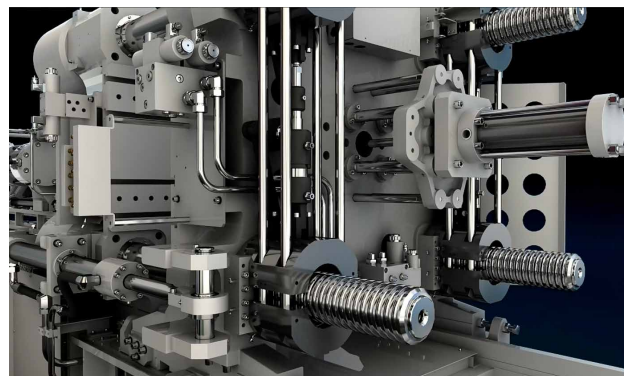
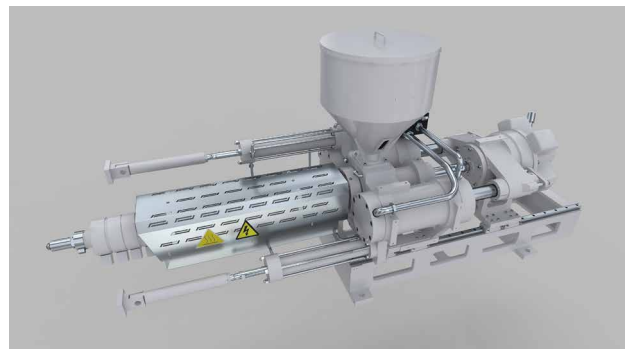
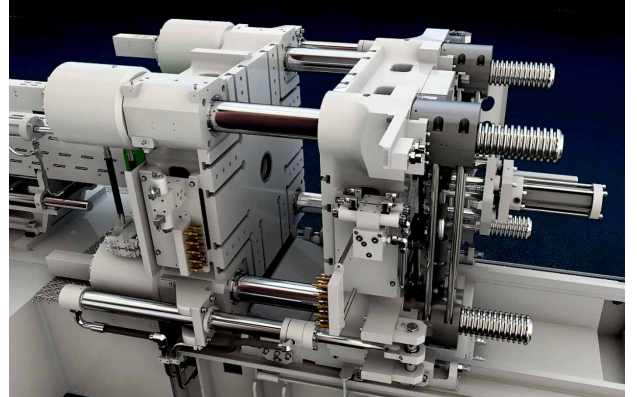
No friction between the tie bar and moving platen securing longer machine life. The two diagonally placed hydraulic cylinders increase mould opening and closing speed.

### Optimized injection unit

Newly optimized injection unit design, Linear guide rail greatly reduces mechanical loss and improves machine performance

### High-performance hydraulic system

With high-performance servo and integrated hydraulic system, output efficiency and response are optimized. Power consumption and noise are significantly reduced.



Welltec at Chinaplas 2023: 12A31

For more information:

[www.donghua-ml.com](http://www.donghua-ml.com)