

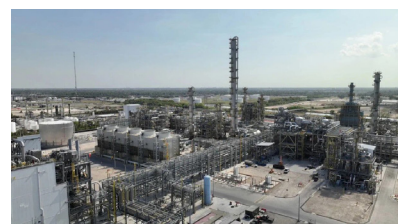
Building local capacity to strengthen global supply capability

ExxonMobil Product Solutions has manufacturing capacity in every major region of the world, serving large and growing markets. More than 90 percent of the company's chemical capacity is integrated with ExxonMobil refineries or natural gas processing plants. These world-scale manufacturing sites, combined with our network of technology centers, provide the capacity to meet customer preferences in every region.

North America



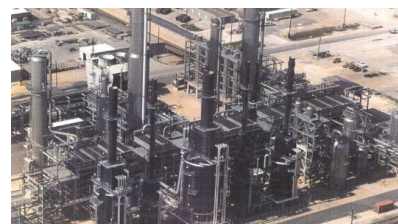
Founded in 1919, ExxonMobil's **Baytown Chemical Plant (BTCP)** has the capacity to produce more than eight billion pounds of petrochemical products each year, supporting six ExxonMobil Product Solutions Company business lines. Among these six lines, propylene is converted to high-performance Polypropylene products, which are used in diverse products such as auto battery cases, auto interior and trim components, carpet fibers, molded goods, packaging, etc. The Solution Polymers Unit (SPU) produces polymer modifiers including Vistamaxx™ performance polymers and Exact™ polyolefin elastomers with a capacity of 400 kTA.



In operation since 1982, ExxonMobil's **Plastics Plant in Mont Belvieu** is a modern petrochemical manufacturing facility, specializing in polyethylene production. It became one of the largest polyethylene plants in the world after we completed two new high-performance polyethylene lines that increased the plant's capacity and now produces about 2,300 kTA of polyethylene products per year.



Built along the banks of the Neches River in 1903, ExxonMobil's Beaumont refining facilities have grown into an integrated petrochemical complex. The **Beaumont Polyethylene Plant**, which is located 10 miles west of our Beaumont complex, produces 1,650 kTA of polyethylene products per year.



As one of the largest refining and petrochemical complexes in the world, our **Baton Rouge operations** are a key part of supplying the fuels and chemical products that make modern life possible. The plastics plant produces low-density polyethylene for plastic films, molding, non-woven products and more. The Polyolefins Plant produces high-density polyethylene and polypropylene for end products such as milk containers, diapers, lightweight auto parts and more.



Representing ExxonMobil and SABIC's first joint venture in the Americas, the **Gulf Coast Growth Ventures** world-scale manufacturing facility in San Patricio County, Texas, produces materials used in packaging, agricultural film, construction materials, and more. The operation includes two polyethylene units capable of producing more than 650 kTA of our performance polyethylene and linear low-density polyethylene per year.



Asia Pacific



As ExxonMobil's largest integrated manufacturing complex in the world, **Singapore Integrated Manufacturing Complex** allows us to upgrade each molecule to its highest value.

- The Singapore Polyethylene Plant produces 1,900 kTA of polyethylene products per year, using the ethylene from the Singapore Olefins Plant as the main feedstock. SPE is one of the world's largest capacity polyethylene extrusion and pelletizing lines that utilizes ExxonMobil's cutting-edge GasPhase Polyethylene Technology (GPPT).
- The Singapore Polypropylene Plant, with an annual capacity of 930 kTA, stands out as one of the highest-capacity facilities utilizing the ExxonMobil Polypropylene Technology for producing homo-polymer and impact co-polymer resins.
- Using our proprietary catalyst technology to ensure uniform and consistent polymers for greater strength, better sealing properties, and improved clarity, the Singapore Elastomers Plant is the company's primary supply point of Vistamaxx™ performance polymers to customers globally, with an annual capacity of 300 kTA.



ExxonMobil participated in China's first fully integrated refining, petrochemicals and fuels marketing venture with foreign participation in 2007, along with Saudi Aramco, Sinopec and Fujian province. **The Fujian Refining and Ethylene Joint Venture Project**, located in Quanzhou, produces 240 kTA per year of our linear low-density and high-density polyethylene.



To serve the needs of the market, ExxonMobil has had a longstanding presence of high-quality marketing, sales and technology resources across China. We have been investing in new technologies and innovations in both our facilities and products to meet market evolving needs. Our **Huizhou Chemical Complex**, which is under construction, will include:

- Two performance LLDPE lines with a total capacity of 1.2 mTA, including one of the world's largest LLDPE lines, 730 kTA
- The world's largest single LDPE line with 500 kTA capacity
- Two differentiated performance polypropylene lines with combined 0.9 mTA capacity, and multiple technology innovations: homopolymers polypropylene/mPP line with super critical loop reactor capability, the most capable impact copolymers polypropylene line in the ExxonMobil circuit with dual-series gas phase reactors and low odor/VOC finishing facilities. These features support future product innovation and will distinguish ExxonMobil from suppliers.



This project will bring domestic supply capability of our flagship brands like Exceed™ and Exxtra™ performance polymers, which will allow us to continue to grow and innovate with our customers.

With the Huizhou Chemical Complex, our responsiveness to changing customers supply needs will improve. Together with manufacturing facilities in other parts of the world, ExxonMobil will be able to offer unparalleled supply reliability to ensure customers get stable supply, free from disruptions in local or global supply chain.

Europe, the Middle East and Africa



The Meerhout Polymers Plant is one of the largest LDPE manufacturing facilities in Europe with a capacity of 500 kTA, and it supplies products to numerous industries. The plant is organizationally twinned with the Zwijndrecht Polymers Plant, which produces special types of polyethylene in relatively small volumes (400 kTA), as they are in fact complementary.



The Al-Jubail Petrochemical Company (Kemya), a 50/50 joint venture between SABIC and ExxonMobil. With initial production commencing in 1984, Kemya was one of Saudi Arabia's initial polyethylene producers. Today, the site has the capacity to produce 700 kTA per year of our low-density and linear low-density polyethylene products.



Yanpet in Yanbu, another long-standing joint venture with SABIC in the Kingdom of Saudi Arabia, has the annual capacity of 700 kTA of our high-density polyethylene products.

ExxonMobil
Signature Polymers

Bring your impossible



© 2024 ExxonMobil. ExxonMobil, the ExxonMobil logo, the interlocking "X" device and other product or service names used herein are trademarks of ExxonMobil, unless indicated otherwise. This document may not be distributed, displayed, copied or altered without ExxonMobil's prior written authorization. To the extent ExxonMobil authorizes distributing, displaying and/or copying of this document, the user may do so only if the document is unaltered and complete, including all of its headers, footers, disclaimers and other information. You may not copy this document to or reproduce it in whole or in part on a website. ExxonMobil does not guarantee the typical (or other) values. Any data included herein is based upon analysis of representative samples and not the actual product shipped. The information in this document relates only to the named product or materials when not in combination with any other product or materials. We based the information on data believed to be reliable on the date compiled, but we do not represent, warrant, or otherwise guarantee, expressly or impliedly, the merchantability, fitness for a particular purpose, freedom from patent infringement, suitability, accuracy, reliability, or completeness of this information or the products, materials or processes described. The user is solely responsible for all determinations regarding any use of material or product and any process in its territories of interest. We expressly disclaim liability for any loss, damage or injury directly or indirectly suffered or incurred as a result of or related to anyone using or relying on any of the information in this document. This document is not an endorsement of any non-ExxonMobil product or process, and we expressly disclaim any contrary implication. The terms "we," "our," "ExxonMobil Product Solutions" and "ExxonMobil" are each used for convenience, and may include any one or more of ExxonMobil Product Solutions Company, Exxon Mobil Corporation, or any affiliate either directly or indirectly stewarded.